

SCALE 1" = 300'

* inadequate description

TAX DUPLICATE 37.08 AC
DEEDS = 39.6559 AC

Board of Township Trustees of Russell Township

Genesee County Board of Commissioners
516-1111

TAX DUPLICATE 37.08 AC

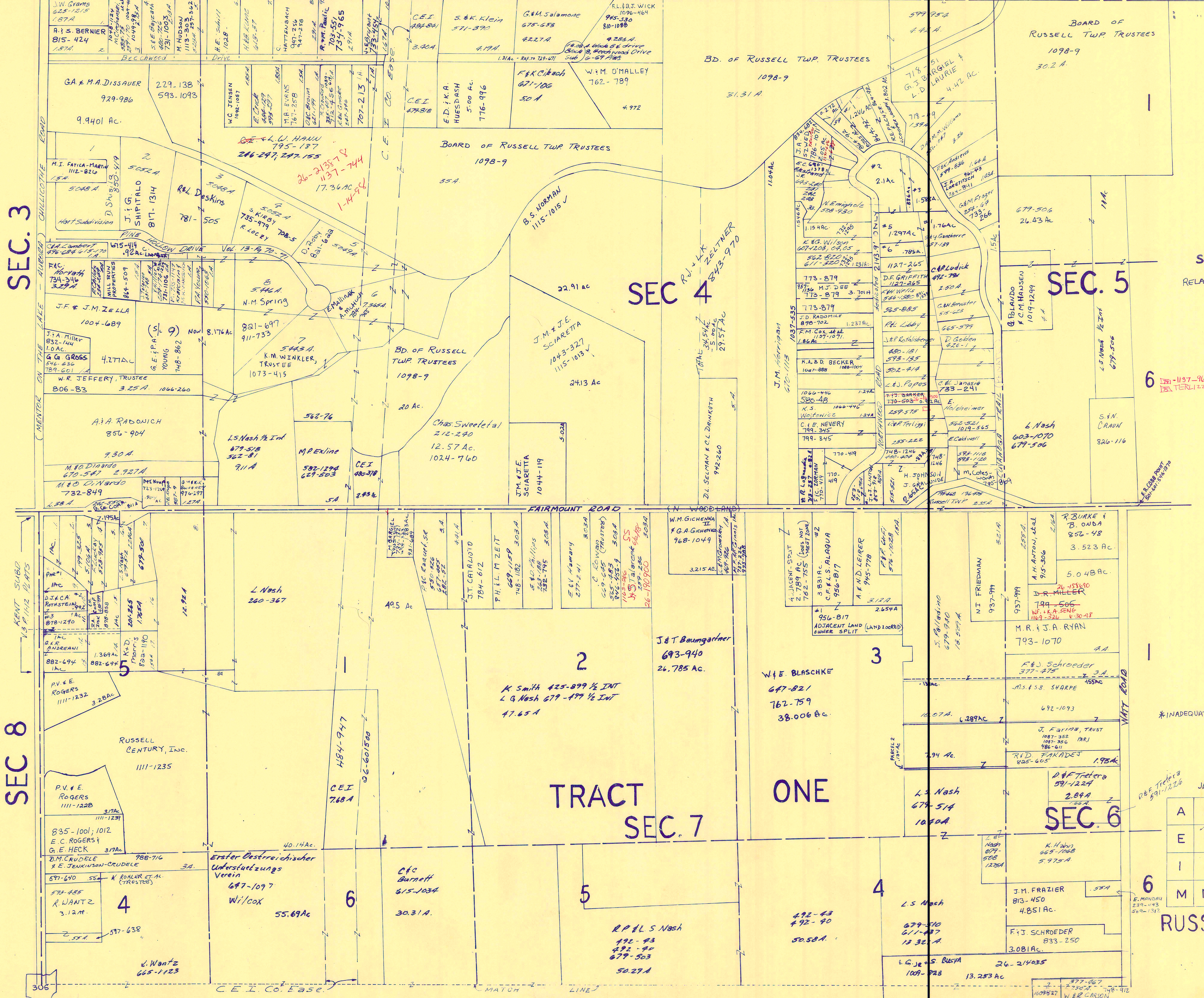
JANUARY 1, 1998

A	B	C	D
E	F	G	H
I	J	K	L
M	N	O	P

RUSSELL-B

RELATIVE REPRESENTATION

C BEECHWOOD DRIVE SUB DIV VOL 6-Pg 69 S T E R R O W N S H I P



SCALE 1" = 300'
RELATIVE REPRESENTATION

JANUARY 1, 1998

A	B	C	D
E	F	G	H
I	J	K	L
M	N	O	P

RUSSELL-C

SEC. 3

SEC. 4

SEC. 5

SEC. 8

TRACT ONE
SEC. 7

SEC. 6

6

RUSSELL-C

*INADEQUATE DESCRIPTION

6 1137-96-WHL WAERTJEN 1/9/98
121 TERLIZZ!

6

6

6

6

6

6

6

6

6

6

6

6

6

6

6

6

6

6

6

6

6

6

6

6

6

6

6

6

6

6

6

6

6

6

6

6

6

6

6

6

6

6

6

6

6

6

6

6

6

6

6

6

6

6

6

6

6

6

6

6

6

6

6

6

6

6

6

6

6

6

6

6

6

6

6

6

6

6

6

6

6

6

6

6

6

6

6

6

6

6

6

6

6

6

6

6

6

6

6

6

6

6

6

6

6

6

6

6

6

6

6

6

6

6

6

6

6

6

6

6

6

6

6

6

6

6

6

6

6

6

6

6

6

6

6

6

6

6

6

6

6

6

6

6

6

6

6

6

6

6

6

6

6

6

6

6

6

6

6

6

6

6

6

6

6

6

6

6

6

6

6

6

6

6

6

6

6

6

6

6

6

6

6

6

6

6

6

6

6

6

6

6

6

6

6

6

6

6

6

6

6

6

6

6

6

6

6

6

6

6

6

6

6

6

6

6

6

6

6

6

6

6

6

6

6

6

6

6

6

6

6

6

6

6

6

6

6

6

6

6

6

6

6

6

6

6

6

6

6

6

6

6

6

6

6

6

6

6

6

6

6

6

6

6

6

6

6

6

6

6

6

6

6

6

6

6

6

6

6

6

6

6

6

6

6

6

6

6

6

6

6

6

6

6

6

6

6

6

6

6

6

6

6

6

6

6

6

6

6

6

6

6

6

6

6

6

6

6

6

6

6

6

6

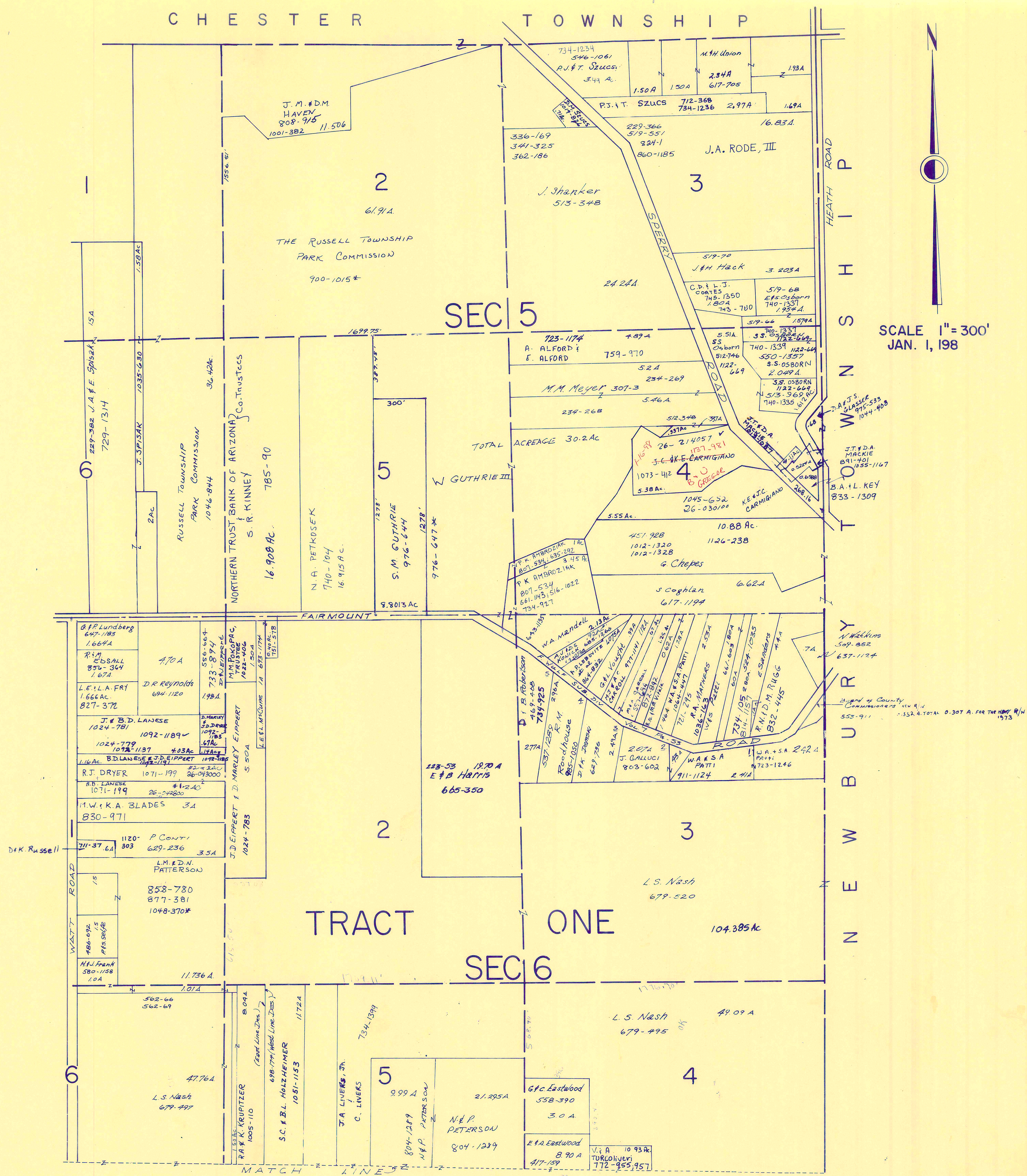
6

6

6

6

CHESTER TOWNSHIP



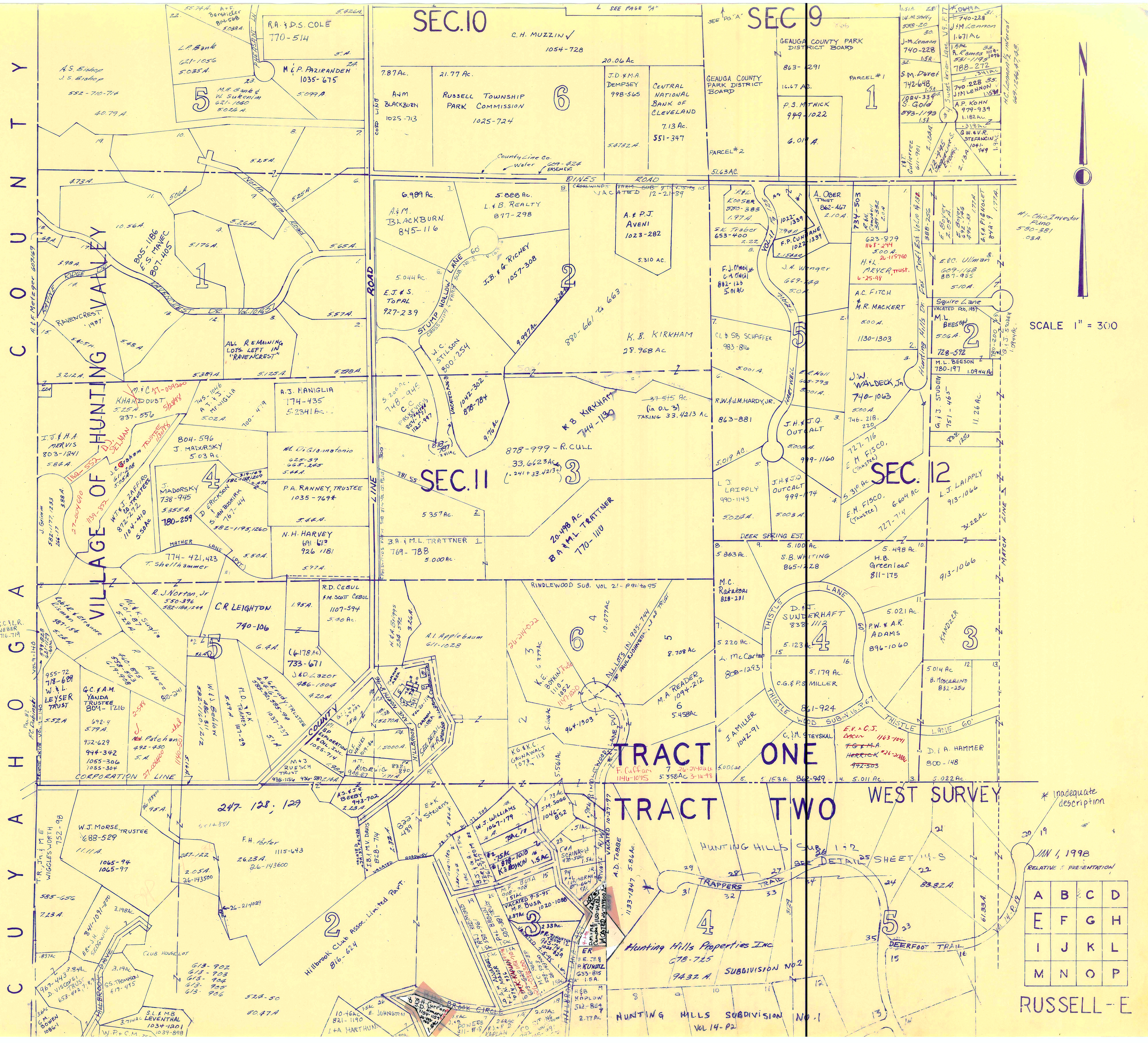
SCALE 1" = 300'
JAN. 1, 198

* Inadequate description

JANUARY 1, 1998
RELATIVE REPRESENTATION

A	B	C	
E	F	G	H
I	J	K	L
M	N	O	P

RUSSELL-D



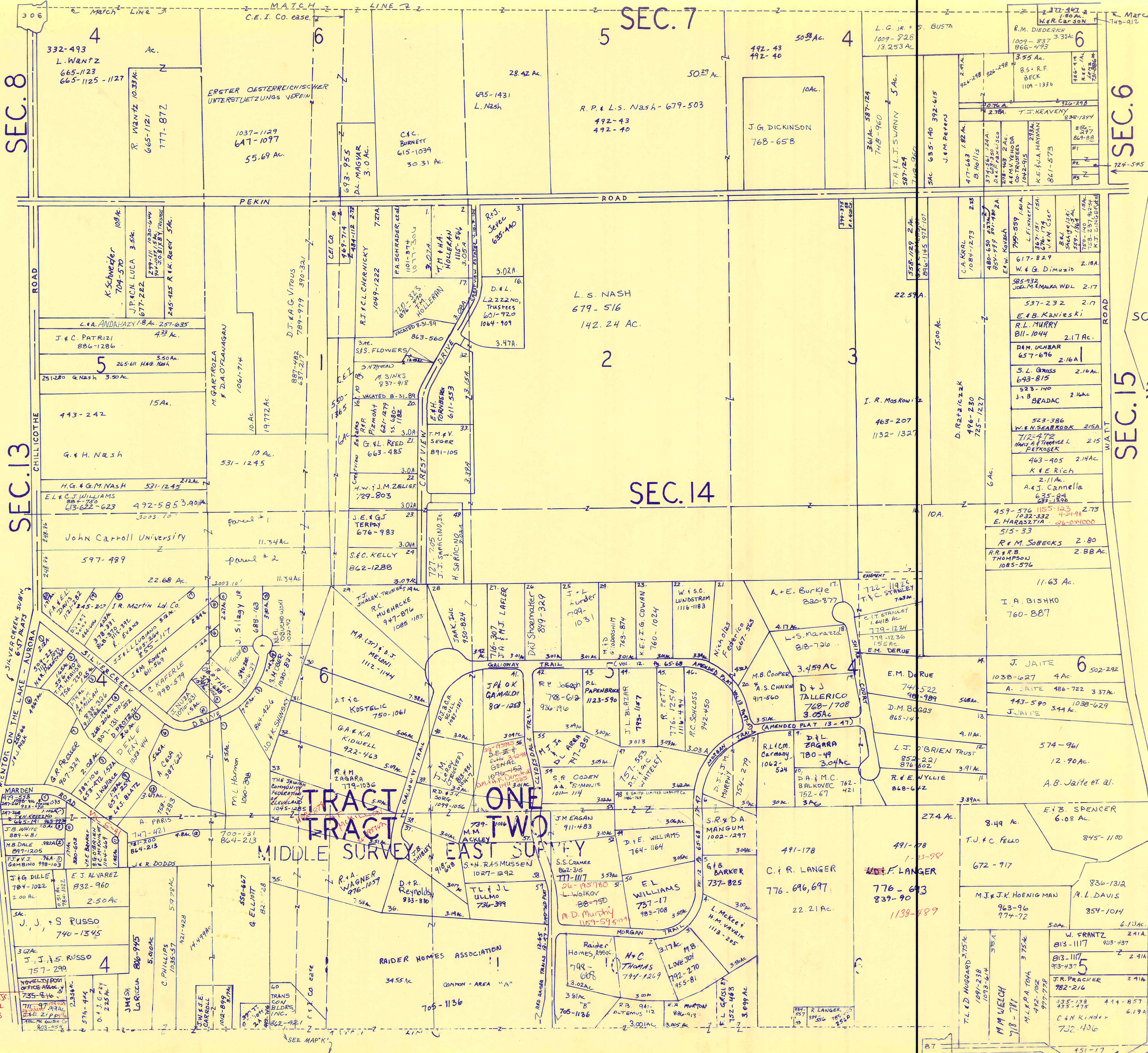
SCALE 1" = 300'

* Inadequate description

JAN 1, 1998
RELATIVE REPRESENTATION

A	B	C	D
E	F	G	H
I	J	K	L
M	N	O	P

RUSSELL-E



SCALE 1" = 300'

Indicates survey on file with tax map dept.

* Inadequate description

A	B	C	D
E	F	G	H
I	J	K	L
M	N	O	P

RUSSELL-G

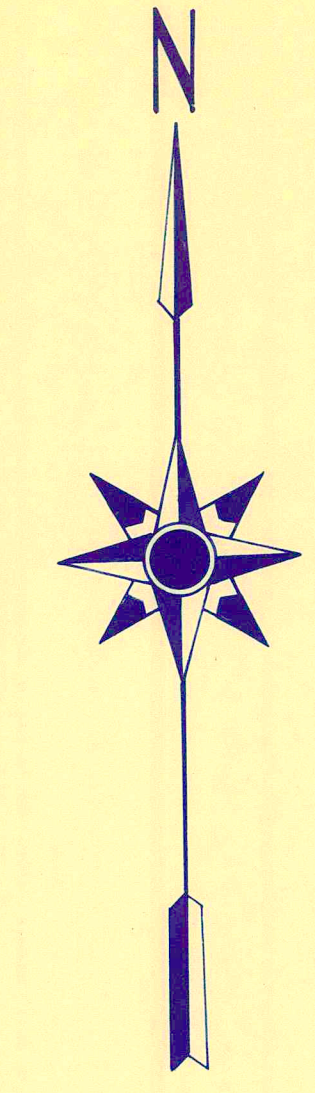
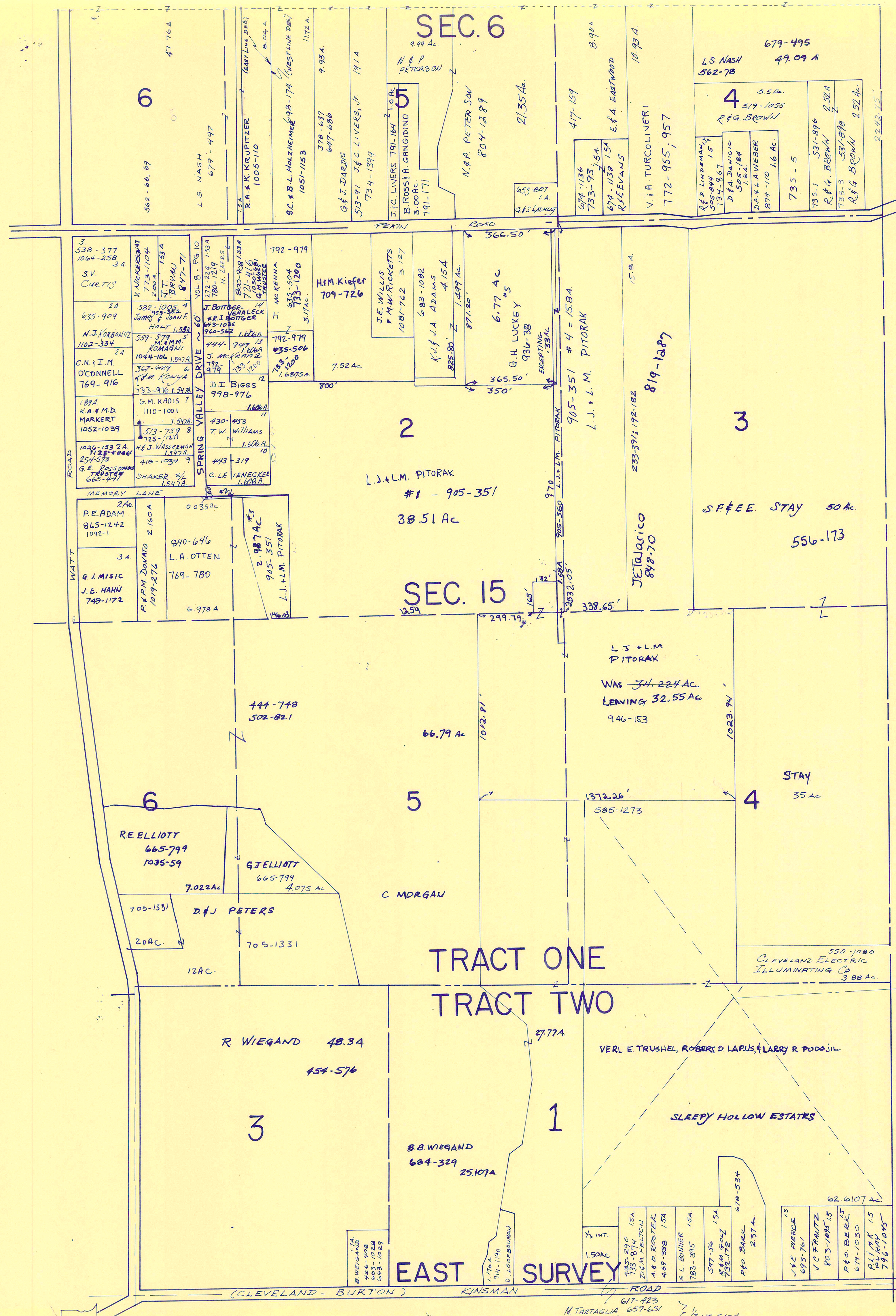
RELATIVE REPRESENTATION
JANUARY 1, 1998

3-6-98
S.I. Pardon
partner - Novelty Post Office
Assoc. 1145-198
26-051100

TRACT ONE
TRACT TWO
MIDDLE SURVEY EAST

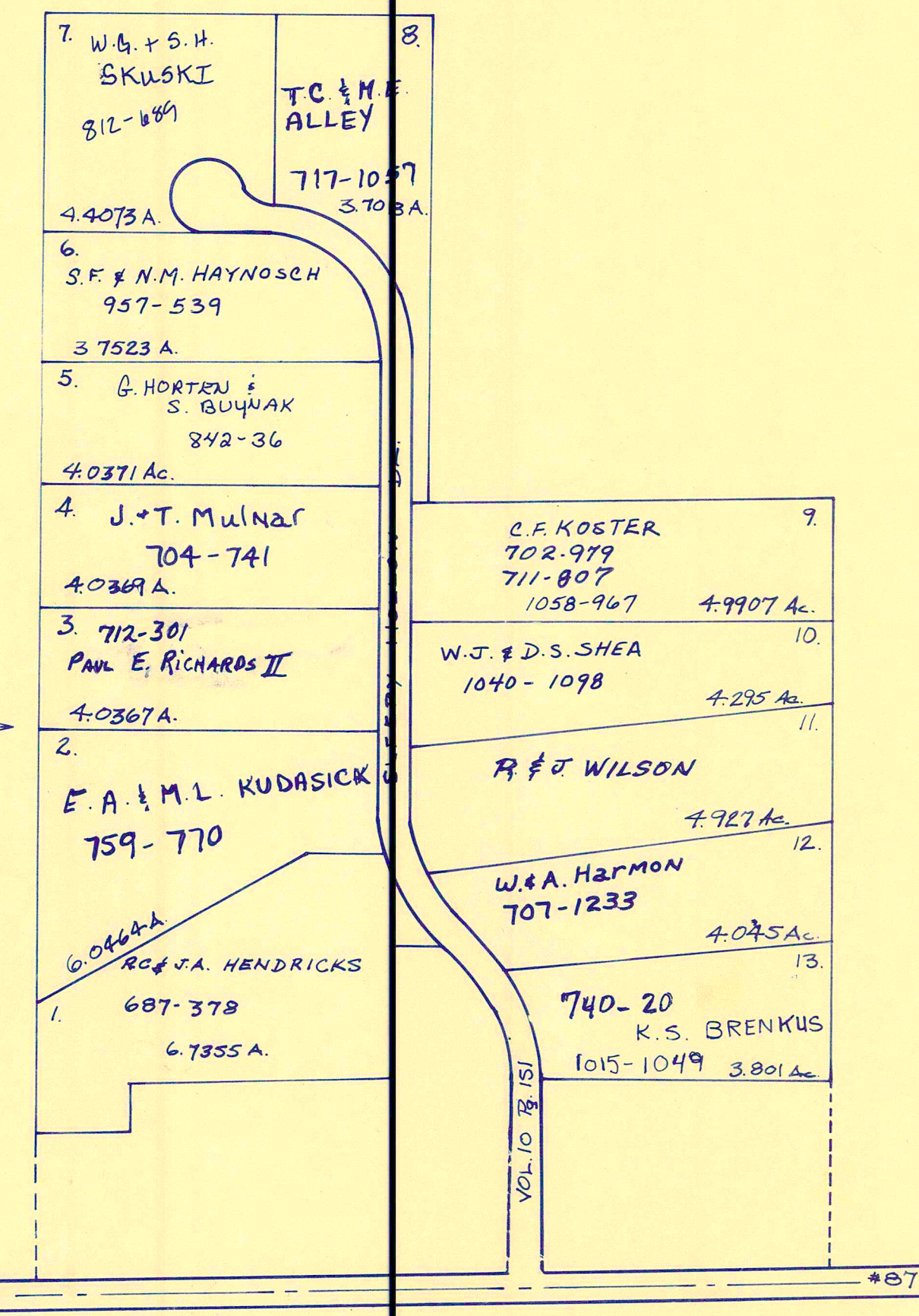
RAIDER HOMES ASSOCIATION
COMMON AREA "A"
705-1136

#1 C & B IANNONE 129-595 0.50A
#2 P. EGGERT 783-1050A (South)
#3 G. PITCHER 784



SCALE = 1" = 300'
JAN. 1, 198

N
O
R
T
H
E
S
T
E
R
N
S
I
D
E
O
F
T
R
A
C
T
O
N
E



* Inadequate description

JANUARY, 1998
RELATIVE REPRESENTATION

A	B	C	D
E	F	G	H
I	J	K	L
M	N	O	P

RUSSELL-H

617-423
N. TARTAGLIA 657-651
D. RAPER & A. TANNER



SCALE 1" = 300'

WEST TRACT TWO THREE

* PT OF 51.25 AC STILL IN SCARSDALE EST 524-238

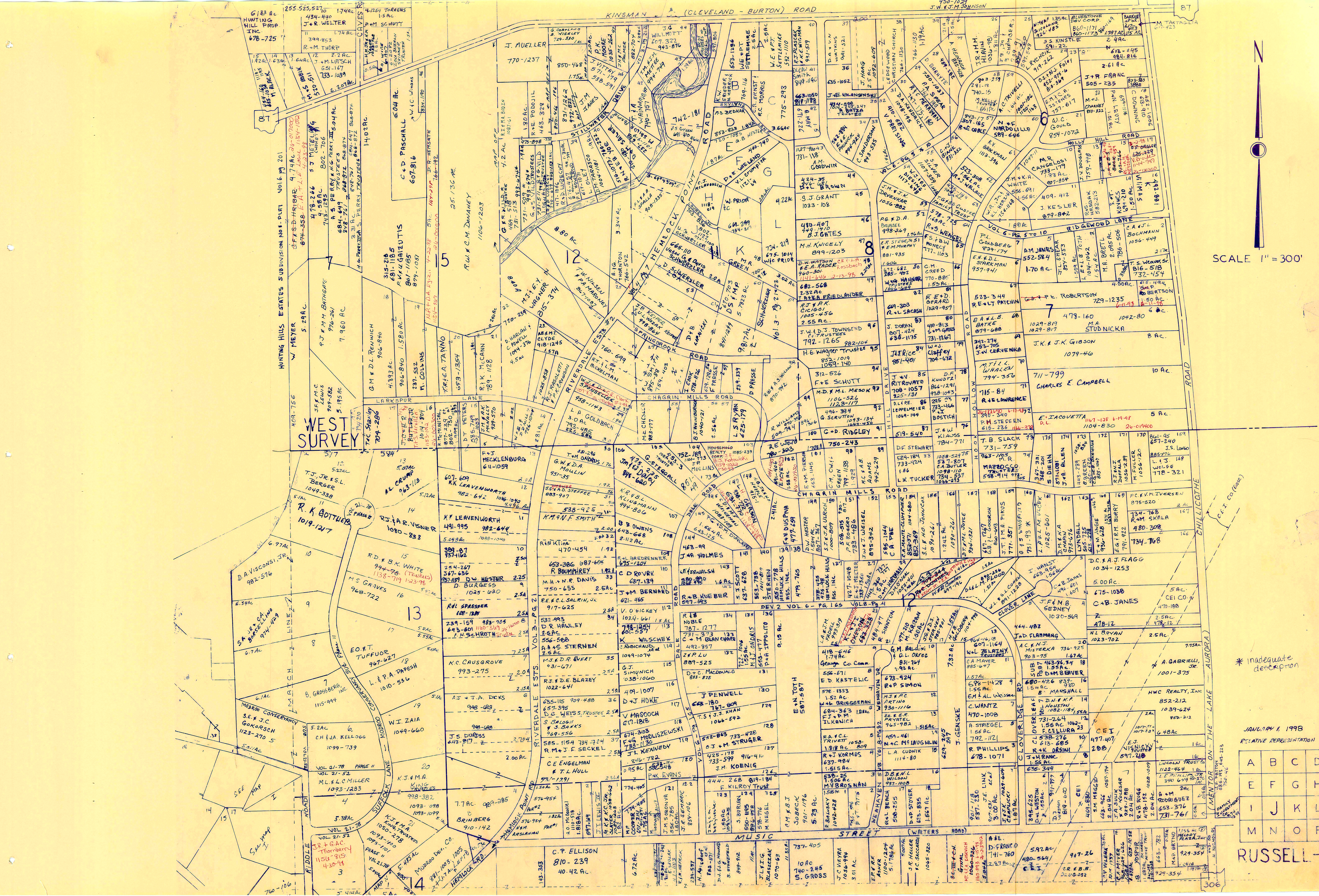
* Inadequate description

MODRAG CONSERVANCY PROJ. 1-2 JANUARY, 1998
SEE MAP J. RELATIVE REPRESENTATION

A	B	C	D
E	F	G	H
I	J	K	L
M	N	O	P

VILLAGE OF CHAGRIN FALLS

RUSSELL



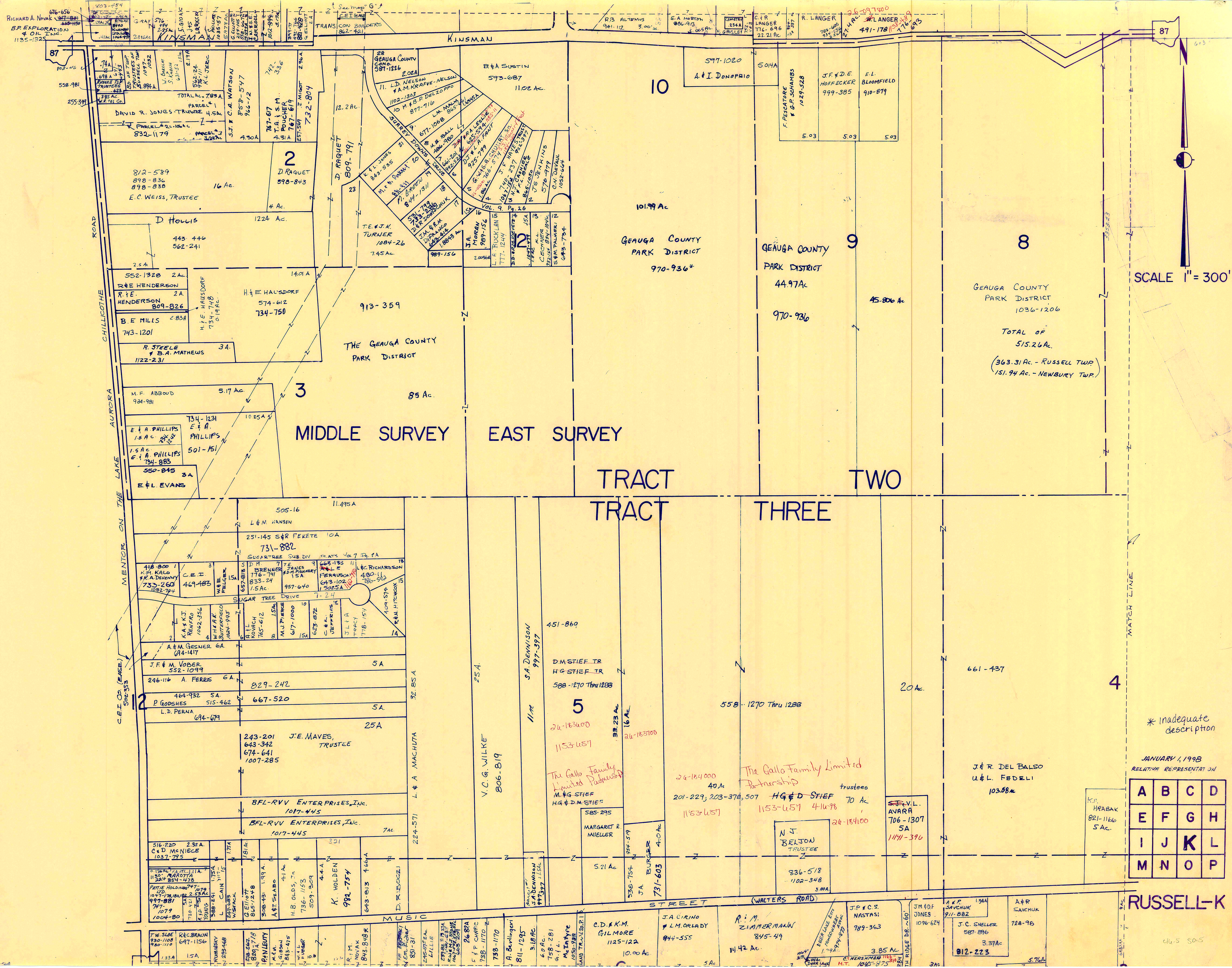
SCALE 1" = 300'

* inadequate description

JANUARY 1, 1998
RELATIVE REPRESENTATION

A	B	C	D
E	F	G	H
I	J	K	L
M	N	O	P

RUSSELL-



SCALE 1" = 300'

* Inadequate description

JANUARY 1, 1998
RELATIVE REPRESENTATION

A	B	C	D
E	F	G	H
I	J	K	L
M	N	O	P

RUSSELL-K

46.5 50.5

CHAGRIN HEIGHTS SUBDIVISION VOL. 3 - PG. 5-6 & 17-18 PLATS

Table listing property owners and addresses for Chagrin Heights Subdivision, including names like G. R. & M. K. Cole, B. R. Labovitz, and M. Alstrom.

Table listing property owners and addresses for Chagrin Heights Subdivision, including names like F. E. Van Lente, E. S. Escott, and J. F. O'Donnell.

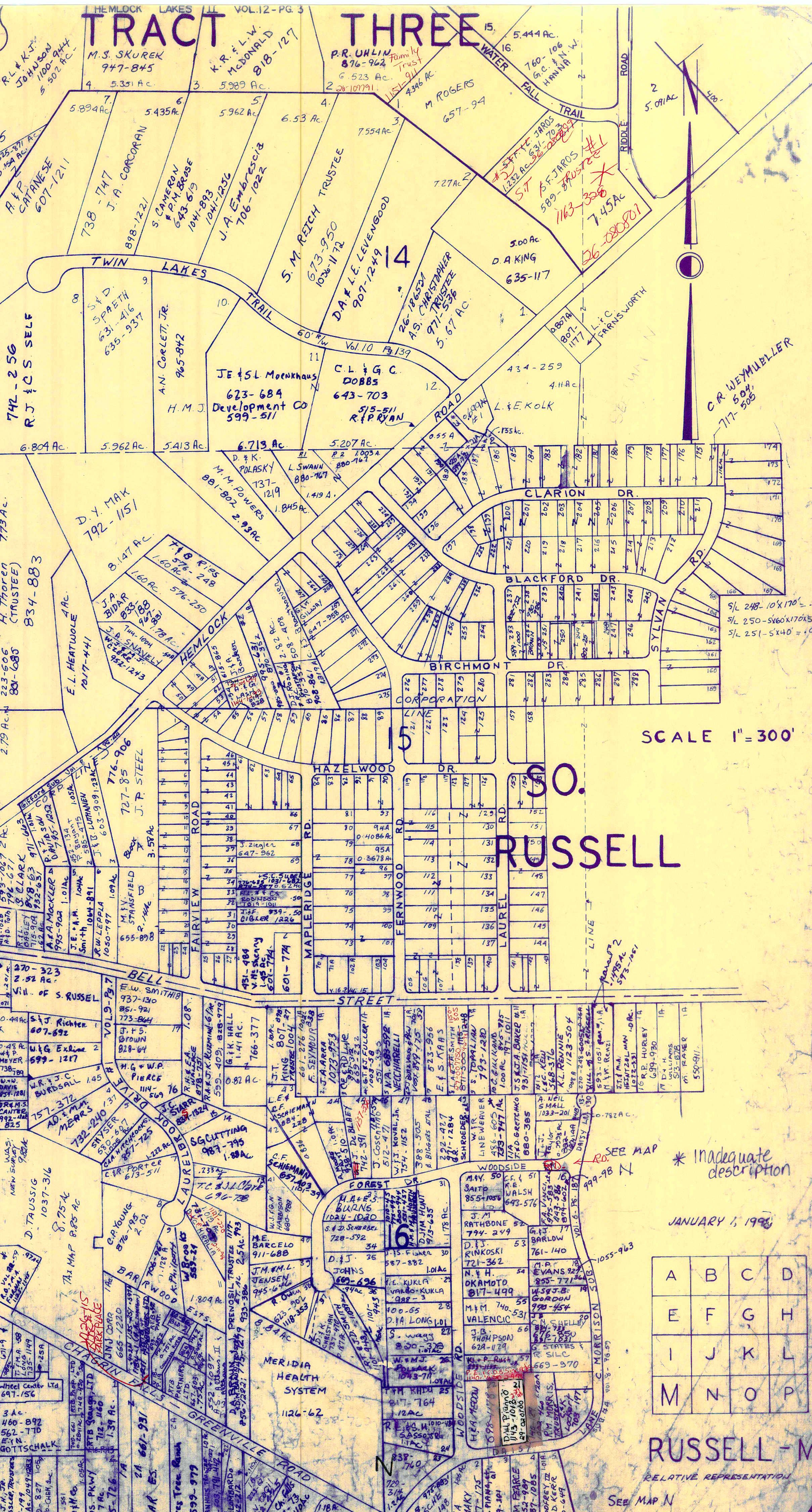
Table listing property owners and addresses for Chagrin Heights Subdivision, including names like J. F. O'Donnell, T. A. Batchelor, and J. D. Shutt.

CHAGRIN FALLS

Table listing property owners and addresses for Chagrin Falls, including names like R. H. Owen, S. Schmidt & P. Schmidt, and J. Nelson.

Table listing property owners and addresses for Chagrin Falls, including names like M. B. Gratzl, J. Shapiro, and D. H. Wallace.

Table listing property owners and addresses for Chagrin Falls, including names like J. E. Johnson, E. M. Sharkey, and F. L. King.



SCALE 1" = 300'

SO. RUSSELL

* Inadequate description

JANUARY 1, 1988

Grid table with letters A-M and numbers 1-15.

RUSSELL - M

RELATIVE REPRESENTATION

SEE MAP N

1 - S. M. Conley 834-1052 - Duplicate, 70 ac. - Deed 69940
2 - L. Barrigall 757-312 - 1339 ac. - 786-581
3 - K. M. Croft 756-1194 - (Frontage 3785) Deed 45 - ac. Tax Duplicate - 2644 - 244

TRACT THREE



M.E. & J.L. Farrow
Lake Louise
Sub'n. Vol. 7, Pg. 64

1	589	897	REV. MATERNI
2	794	754	G.M. YAEGER
3	732	472	R.C. GUNBERG
4	707	127	D.L. ROMAN
5	477	547	G.C. GOODRICH
6	667	772	G.A. BAMBERGER
7	627	222	K.J.M. KESSLER 971-218
8	501	750	P.H. MILLS
9	413	284	H. BAKER 889-1519
10	678	427	S.R. & A. SADLER 677-349
11	702	571	S.A. Sadler
12	537	868	G. MARIANO 868-941
13	784	1103	N.W. BARNHART
14	813	471	K. & J. FOGLE

SCALE 1"=300'
JAN. 1, 1948

Lot 7 -
*AG 145-29-041050-1162-138
MAD COLLINS

14	985	423	SE. R. STANCZYK
15	578	928	A. K. MALMQUIST
16	523	560	M. M. RIEGEL
17	491	287	E. R. MORRISON, TRUSTEES; 997-387
18	804	783	R.W.M.D. SCHOENFELD
19	480	422	R.N. RUDOLPH
20	582	163	RED LEONARD
21	520	1212	W.C. WEATHERHEAD
22	426	42	LAKE LOUISE SUB
23	562	726	S.K. HOLMES
24	891	388	G.T.M. JANSZKY
25	922	351	"
26	922	351	G.W. & P. MYNCHENBERG
27	822	99	C. ZIEGLER
28	551	570	R.W. & C. MASSIELLO
29	521	346	T. & J. JICHA
30	851	122	T.E. & S.E. HERBERER
31	729	703	B.A. WEBSTER
32	463	348	E. SCHEFFIELD
33	772	396	R.W. & C.S. MOBLEY, JR.
34	538	637	G.G. & S. SEE
35	832	1202	T.J. Mc DANIELS
36	912	49	"
37	574	412	R. & D. BRIGER
38	574	412	J.B. TRIPP
39	914	1049	D.L. & N. COOPERIDER
40	74	183	G. & D. BUTNER
41	801	807	E.J. MATHEWS
42	526	285	J. COLEMAN
43	526	285	"
44	686	260	H.L. BAKER 944-740
45	410	377	W.M. GODWIN
46	520	843	A.G. SMITH
47	653	1777	H.E. & B. JOHNSON, TRUSTEES
48	931	262	A.D. KRAUSE
49	1018	119	A.M. OUNNING
50	854	33	R. Myers & T. Newman
51	494	169	R.S. FEUCHT
52	862	1023	L.G. PAYNE
53	643	389	H.D. MARRA
54	395	502	E. GOTTSCHEK
55	881	447	A. NICOL
56	582	436	T.W. RIEHL
57	538	723	C.S. J. REPRESENTATIVE TRUSTEE 1077-100
58	1110	18	R.E.L. BROWN
59	980	623	S.A. B. KOHN
60	754	1011	H.G. & E.R. DeRee
61	66	66	"
62	66	66	"
63	66	66	"

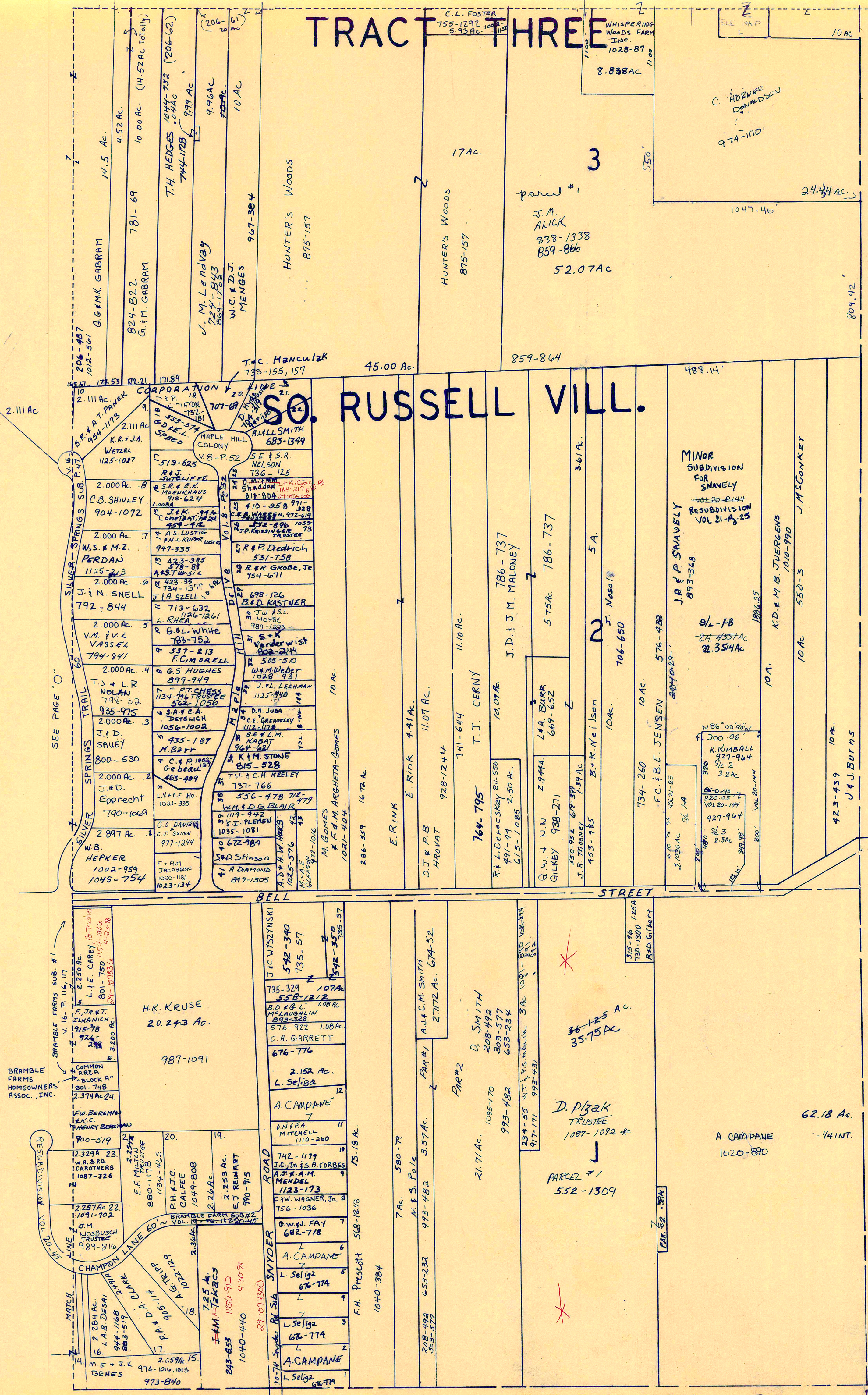
* Inadequate description
Indicates survey on file with tax map dept.

A	B	C	D
E	F	G	H
I	J	K	L
M	N	O	P

RUSSELL-O

RELATIVE REPRESENTATION

TRACT THREE



N E W B U R Y T O W N S H I P



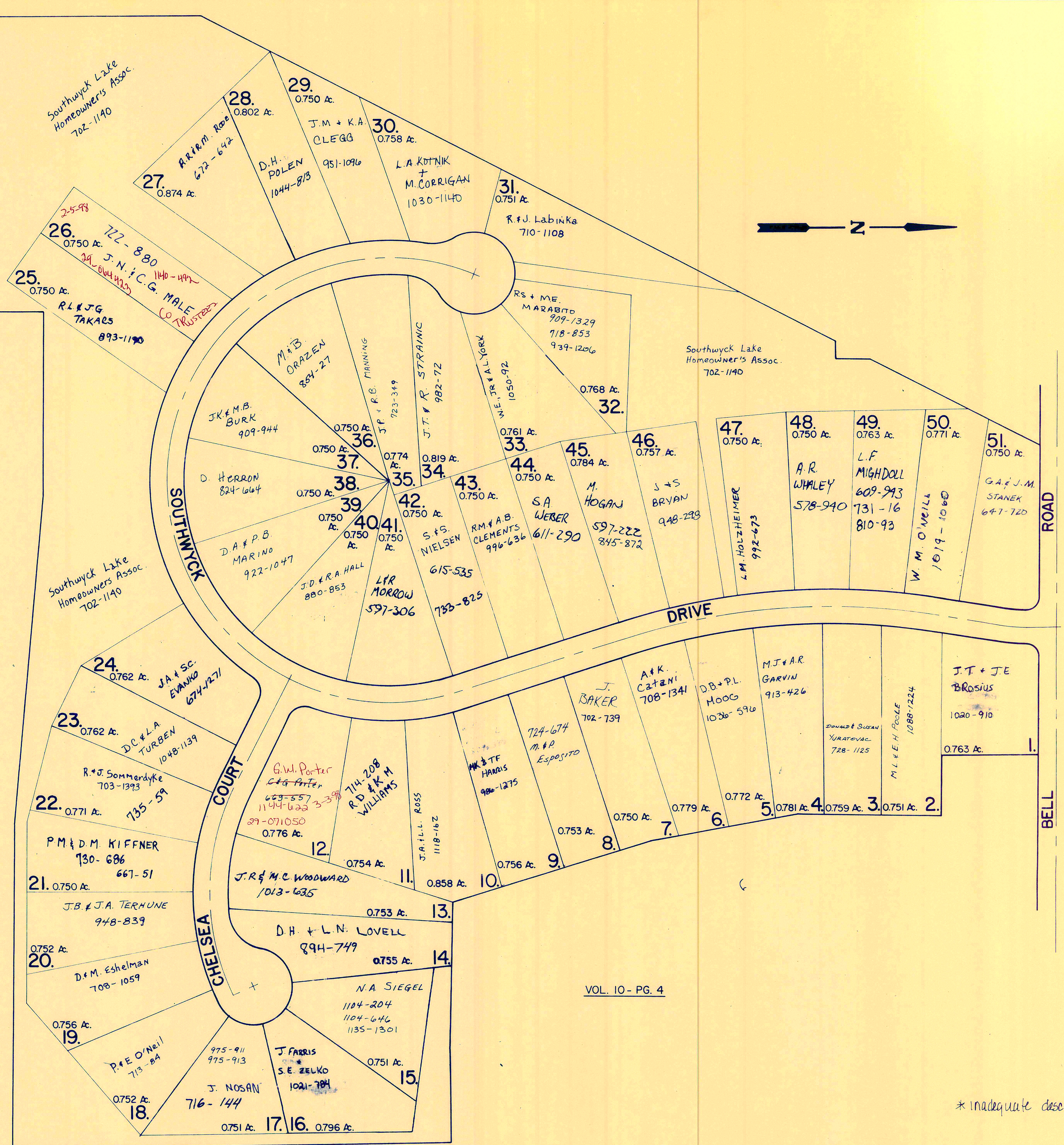
SCALE: 1" = 300'

* Inadequate description

A	B	C	D
E	F	G	H
I	J	K	L
M	N	O	P

RUSSELL - P
 JANUARY 1, 1998
 RELATIVE REPRESENTATION

VILLAGE OF SOUTH RUSSELL
WASTE WATER TREATMENT
PLANT SITE
5.440 Ac.
(0.29 Ac BAINBRIDGE TWP.)



BAINBRIDGE TOWNSHIP
RUSSELL TOWNSHIP

VOL. 9 - PG. 101

SHEERBROOK ACRES

VOL. 10 - PG. 4

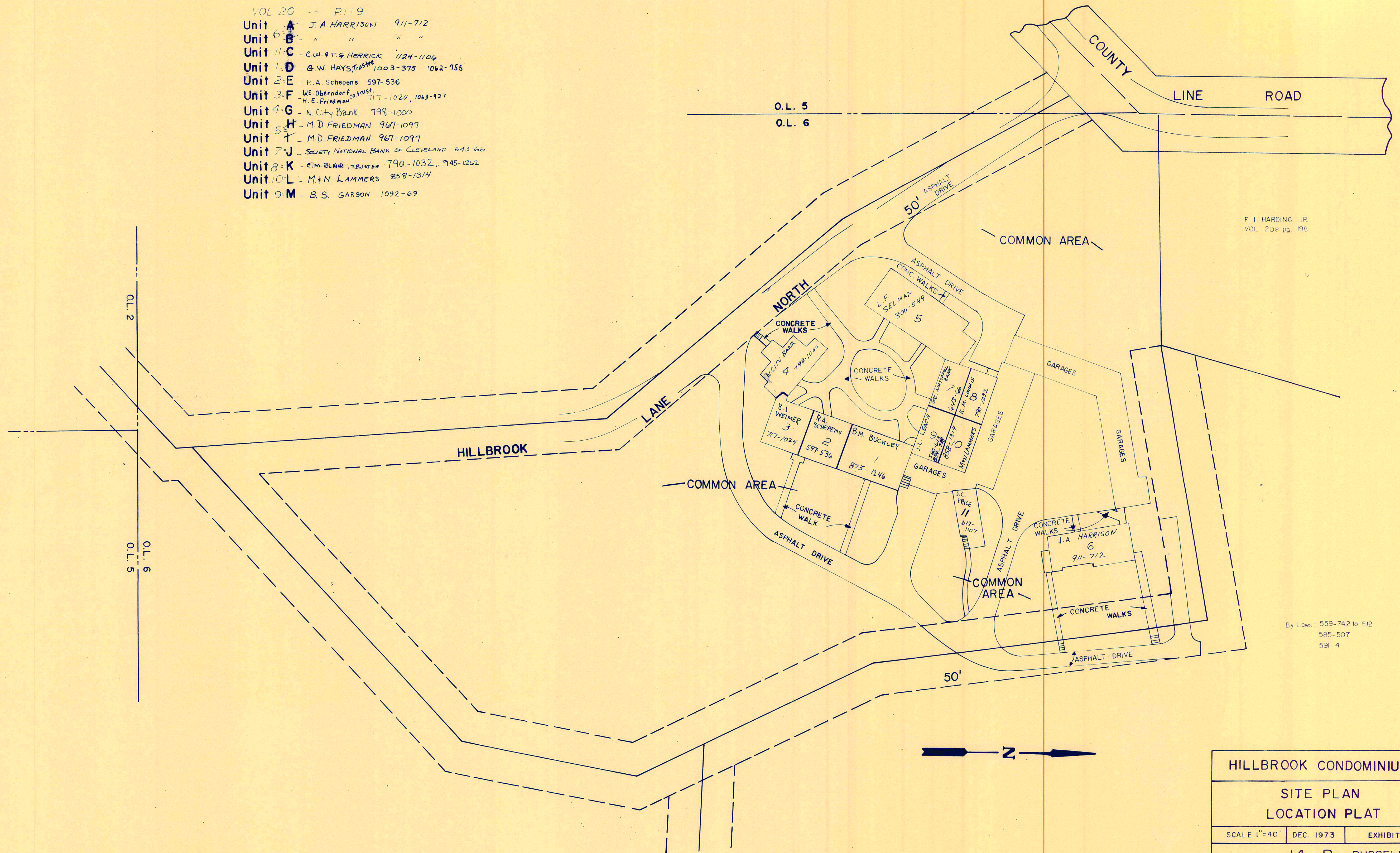
SHEERBROOK ACRES NUMBER 2

JAN. 1, 1998

* inadequate description

AMENDED
HILLBROOK CONDOMINIUM

- VOL 20 - P119
- Unit A - J.A. HARRISON 911-712
 - Unit B - " " " "
 - Unit C - C.W. & T.G. HERRICK 1124-1106
 - Unit D - G.W. HAYS, TRUSTEES 1003-375 1062-755
 - Unit E - R.A. Schepens 597-536
 - Unit F - WE Oberdorf, TRUSTEES
H.E. Friedman 717-1024, 1063-927
 - Unit G - N. City Bank 799-1000
 - Unit H - M.D. FRIEDMAN 967-1097
 - Unit I - M.D. FRIEDMAN 967-1097
 - Unit J - SOCIETY NATIONAL BANK OF CLEVELAND 643-66
 - Unit K - C.M. BLAIR, TRUSTEE 790-1032, 945-1262
 - Unit L - M. & N. LAMMERS 858-1314
 - Unit M - B.S. GARSON 1092-69



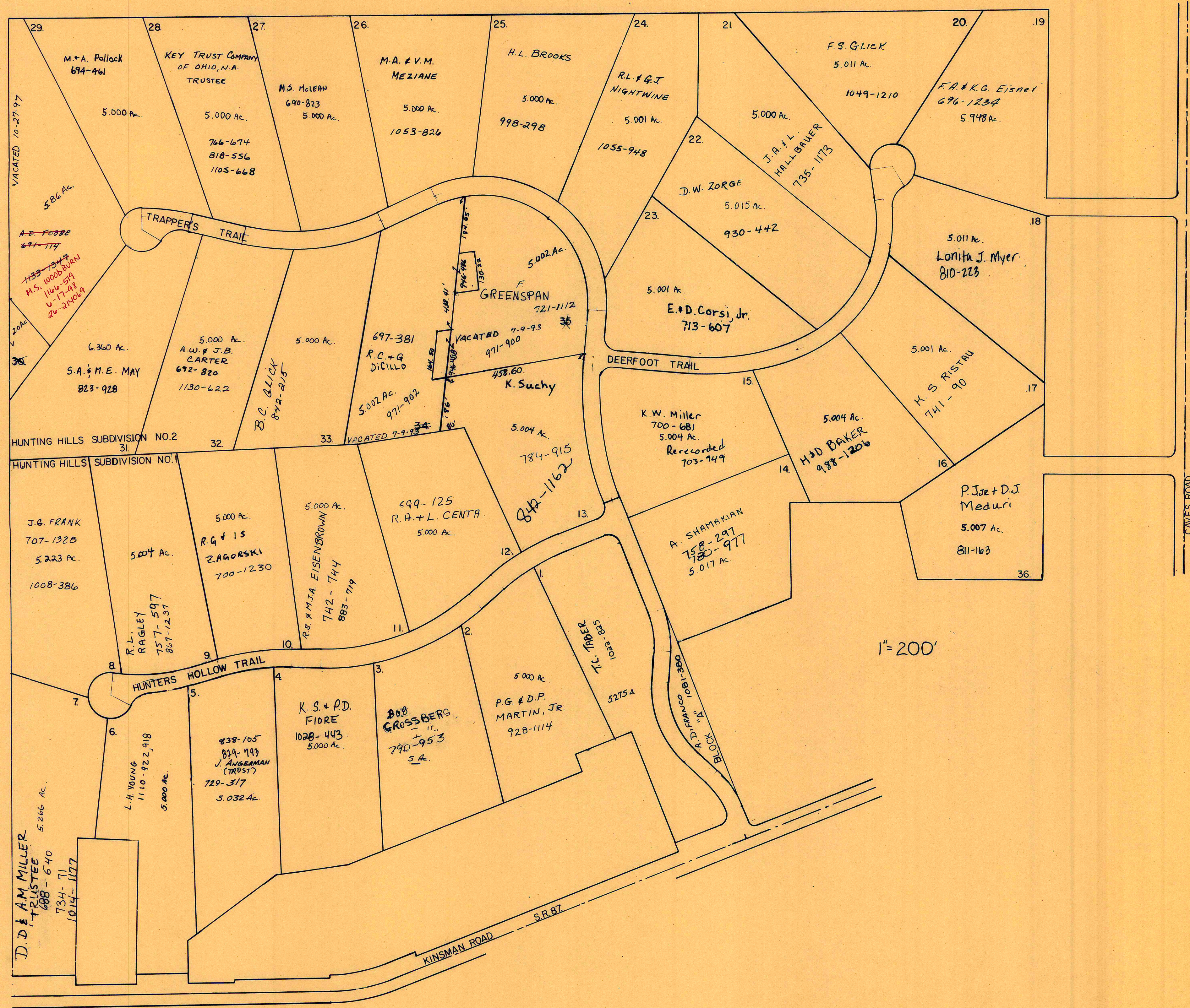
By Laws: 559-742 to 912
585-507
591-4

HILLBROOK CONDOMINIUM		
SITE PLAN		
LOCATION PLAT		
SCALE 1"=40'	DEC. 1973	EXHIBIT B
14 - R RUSSELL		

Recorded Vol. 10 pg. 39
AMENDED VOL 20 - P119 8-11-92

JAN. 1, 1990

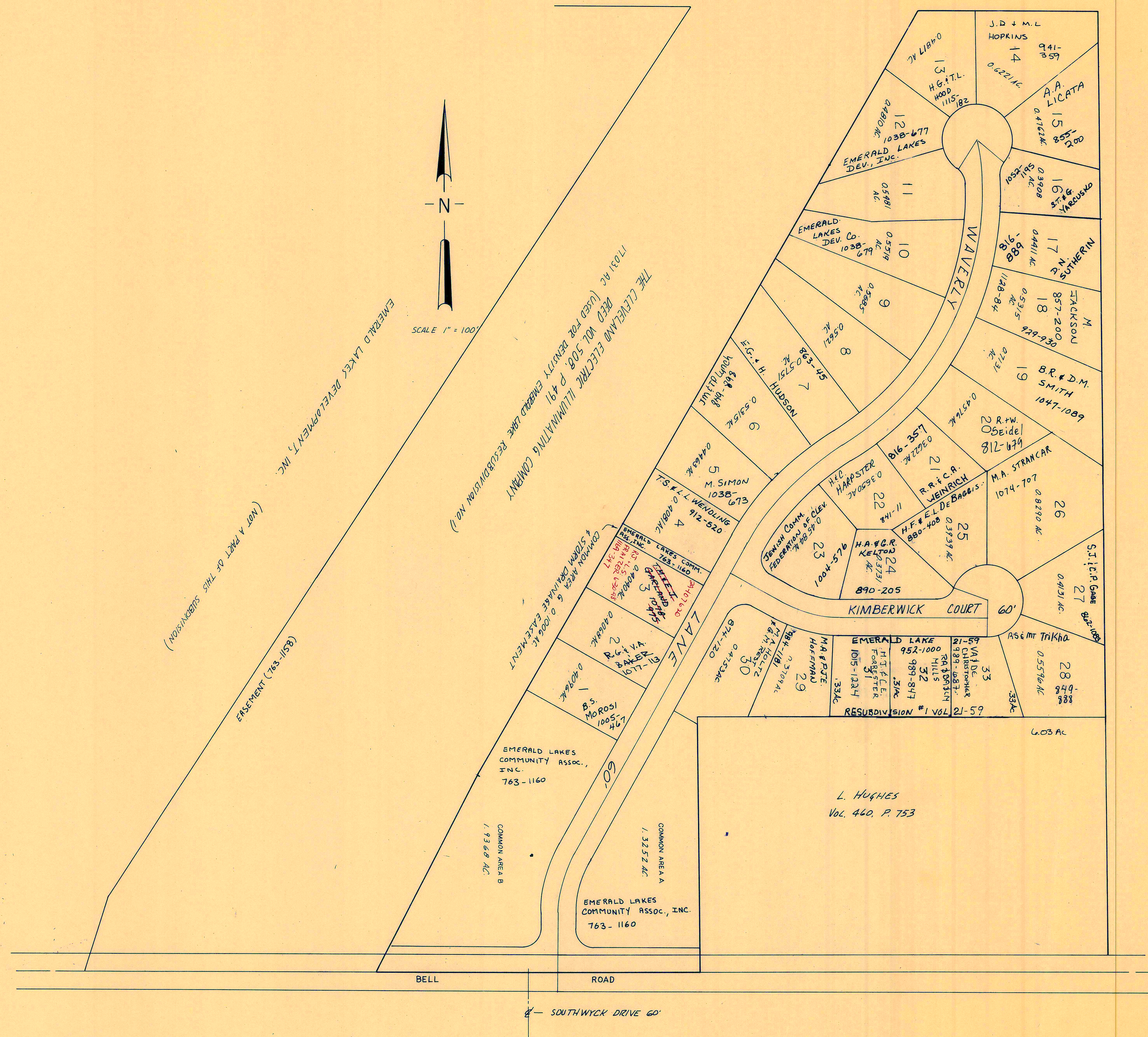
RELATIVE REPRESENTATION
* Inadequate description



HUNTING HILLS SUBDIVISIONS. I.&2.
 no.1. vol. 14. pg. 1-2.
 no.2. vol. 14. pg. 17-19.
 JAN 1,
 HUNTING HILLS PROPERTIES, INC.

* Inadequate description

JANUARY 1, 1998
 RELATIVE REPRESENTATION



EMERALD LAKE
SUBDIVISION NO. 1
VOL. 15 - PG. 107, 108 &
RESUBDIVISION NO. 1
VOL. 15 - PG. 134, 135

1" = 100'

JANUARY 1, 1998

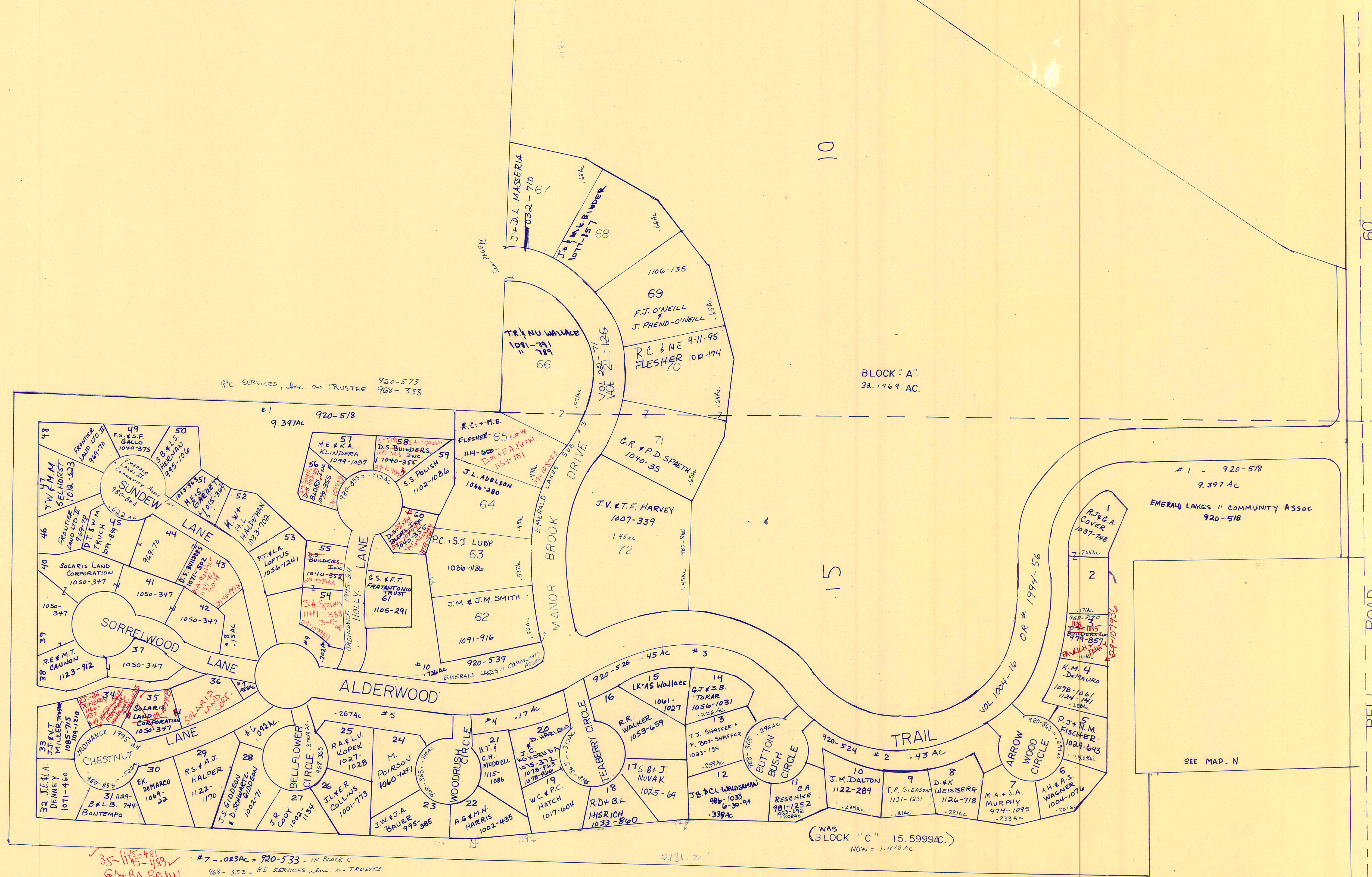
* inadequate description

Buzzett 1888

EMERALD LAKE SUBDIVISION NO. 2 VOL. 20-145

SOUTH RUSSELL VILLAGE

TRACT 3



BLOCK "A" 32.1469 AC.

10

15

60

BELL ROAD

35-1145-481
G.M. BA. BROWN
29-107908

*7 - .023AC = 920-533 - IN BLOCK C
968-335 = RE SERVICES, Inc. as TRUSTEE
968-361 = EMERALD LAKES DEV. INC.
968-365 = EMERALD LAKES II COMMUNITY ASSOC. INC.
980-853 = EMERALD LAKES DEV. INC.
980-863 = EMERALD LAKES II COMMUNITY ASSOC. INC.

(WAS BLOCK "C" 15.5999AC.)
NOW = 1.416AC

SCALE 1" = 100'
JANUARY 1, 1998
RELATIVE REPRESENTATION
CK. SUBDIVISION PLAT VOL. 20-Pg. 145